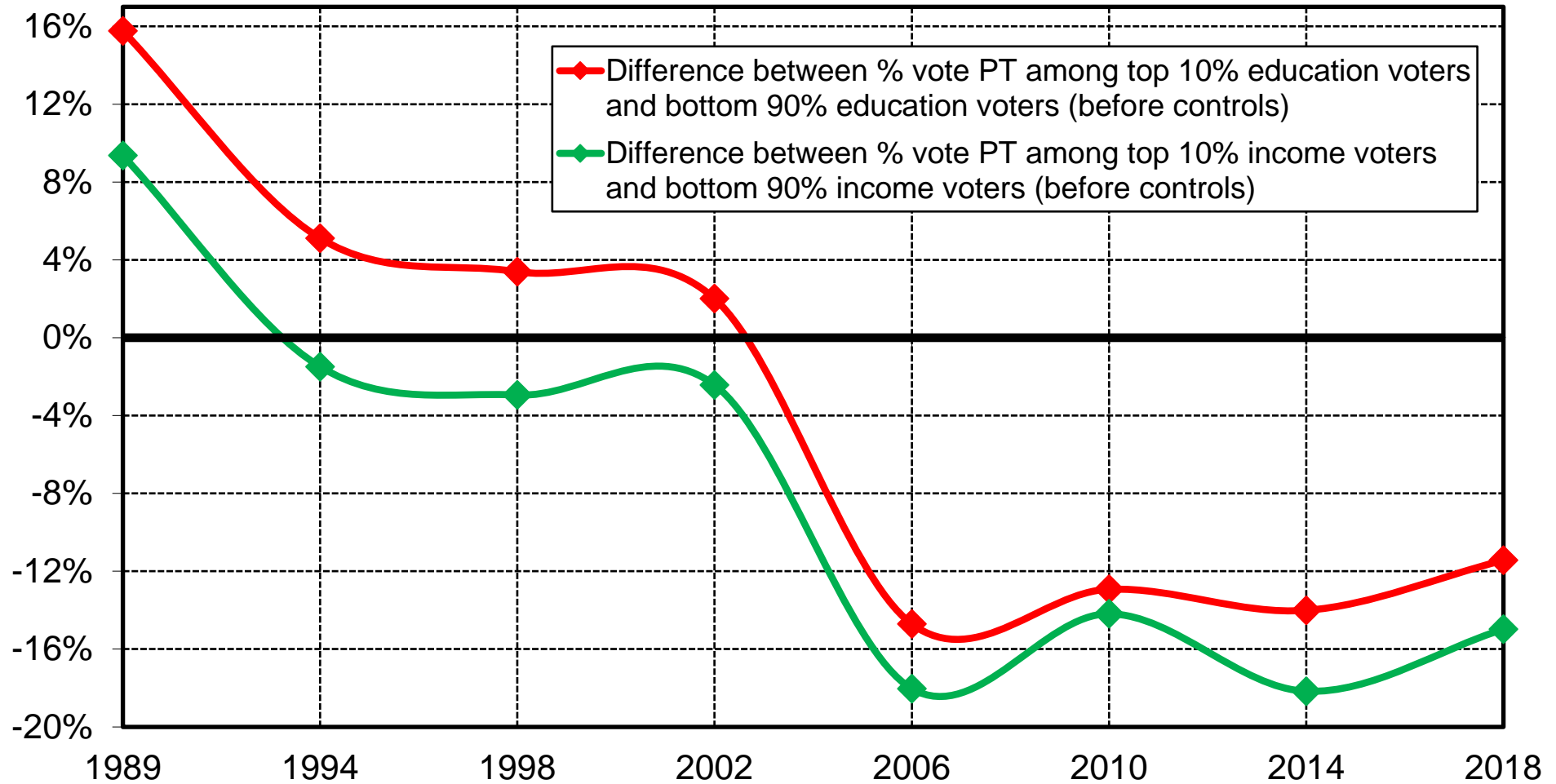


Figure S16.15. The politisation of inequality in Brasil, 1989-2018



Intepretation. During the 1989-2018 period, the vote in favour of PT (Workers Party) in Brasil has become more and more associated with voters with the lowest levels of income and degrees, which was not the case in the first elections conducted after the end of the military dictatorship. Sources and series: see piketty.pse.ens.fr/ideology.