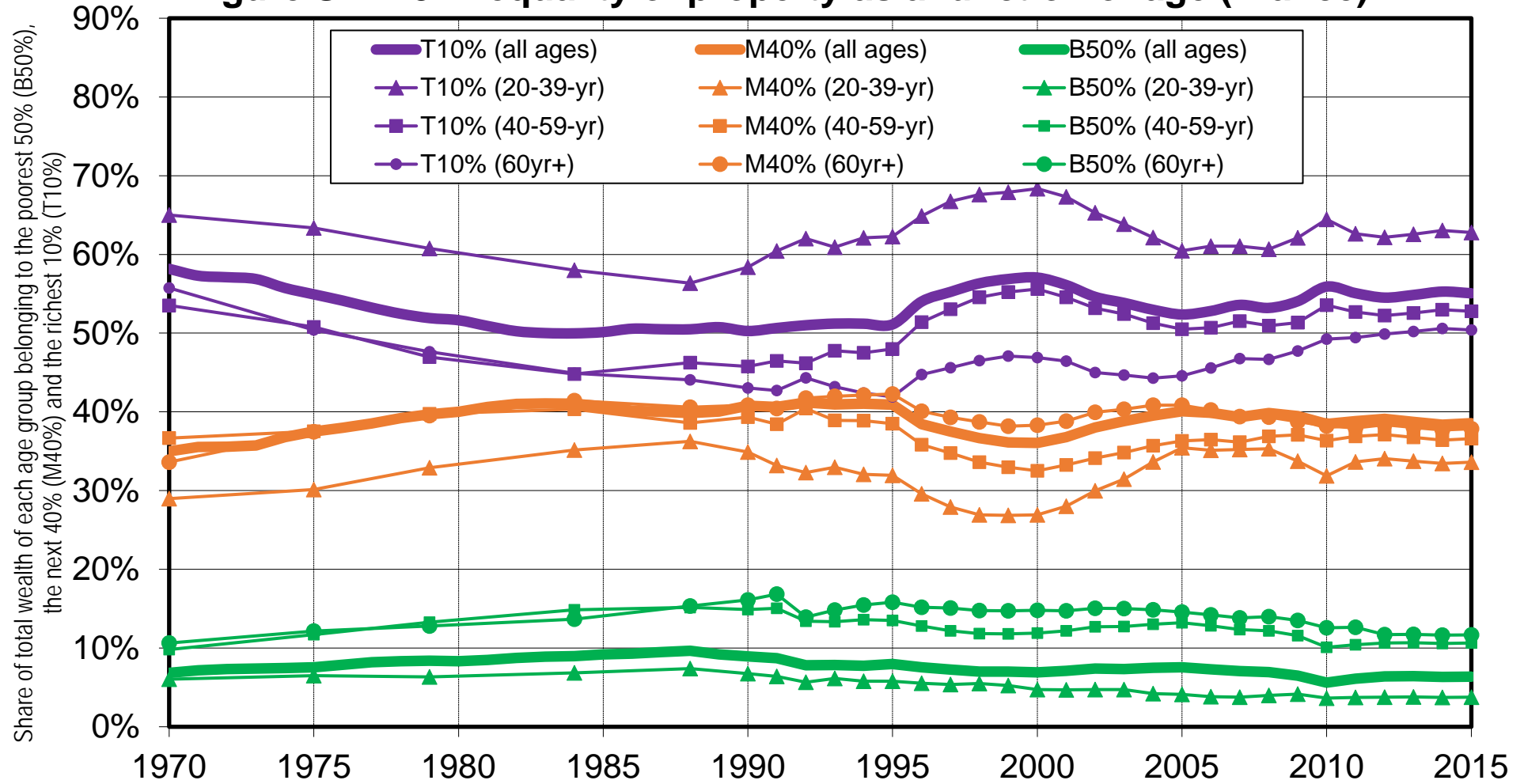


**Figure S11.18. Inequality of property as a function of age (France)**



**Interpretation.** In 2015, among the 20-to-39-year-old individuals, the share of total wealth owned by the poorest 50% (B50%) was equal to 4%, vs. 34% for the next 40% (M40%) and 62% for the richest 10% (T10%). Among 60-year-old-and-over individuals, these shares were 10%, 38% and 50%. The concentration of property is very high at all ages. Sources and series: see piketty.pse.ens.fr/ideology.