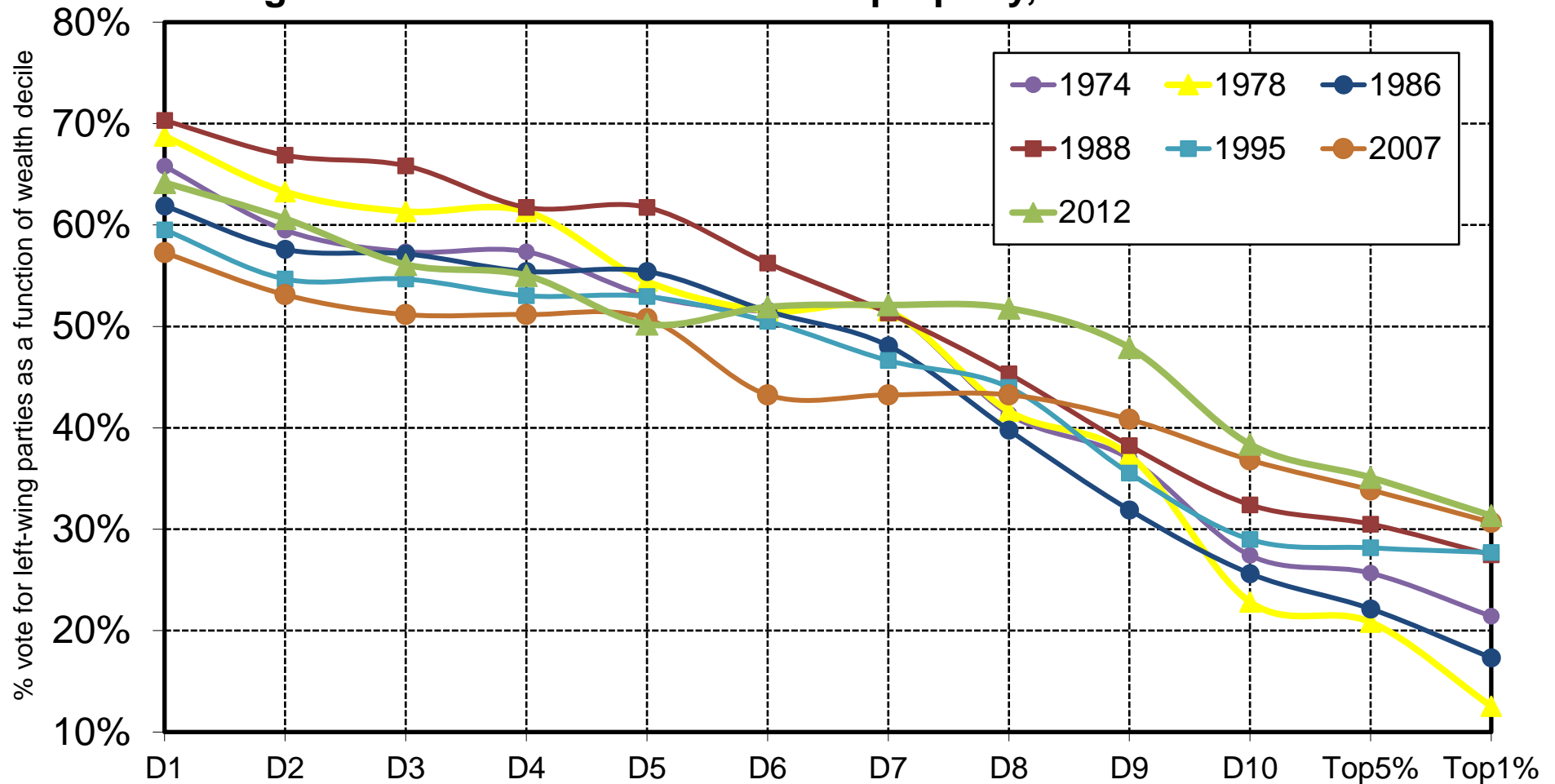


Figure 14.13. Political conflict and property, France 1974-2012



Interpretation. In 1978, left-wing parties (socialists-communists-radicals-greens) obtained 69% of the vote among the bottom 10% wealth voters, 23% among the top 10% wealth voters and 13% among the top 1% wealth voters. Generally speaking, the left vote profile with respect to wealth is sharply declining (much more strongly than with respect to income), especially at the beginning of the period. Note: D1 refers to the 10% lowest wealth holders, D2 to the next 10%,... and D10 to the 10% highest wealth holders. Sources and series: see piketty.pse.ens.fr/ideology.