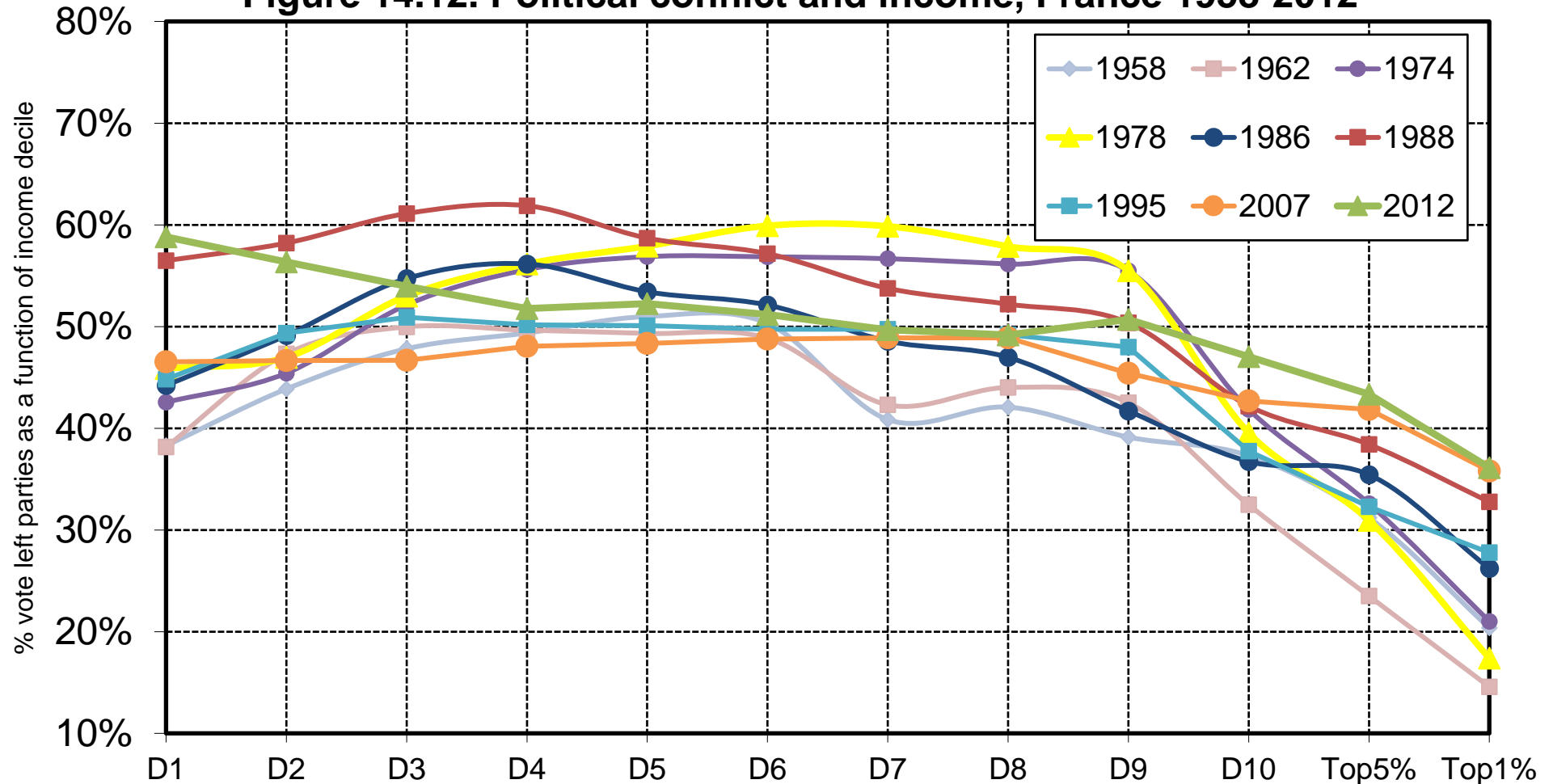


Figure 14.12. Political conflict and income, France 1958-2012



Interpretation. In 1978, left-wing parties (socialists-communists-radicals-greens) obtained 46% of the vote among the bottom 10% income voters, 38% among the top 10% income voters and 17% among the top 1% income voters. Generally speaking, the left vote profile is relatively flat among the bottom 90% income voters, and strongly decreasing among the top 10% income voters, especially at the beginning of the period. Note: D1 refers to the 10% lowest incomes, D2 to the next 10%,..., and D10 to the 10% highest incomes. Sources and series: see piketty.pse.ens.fr/ideology.