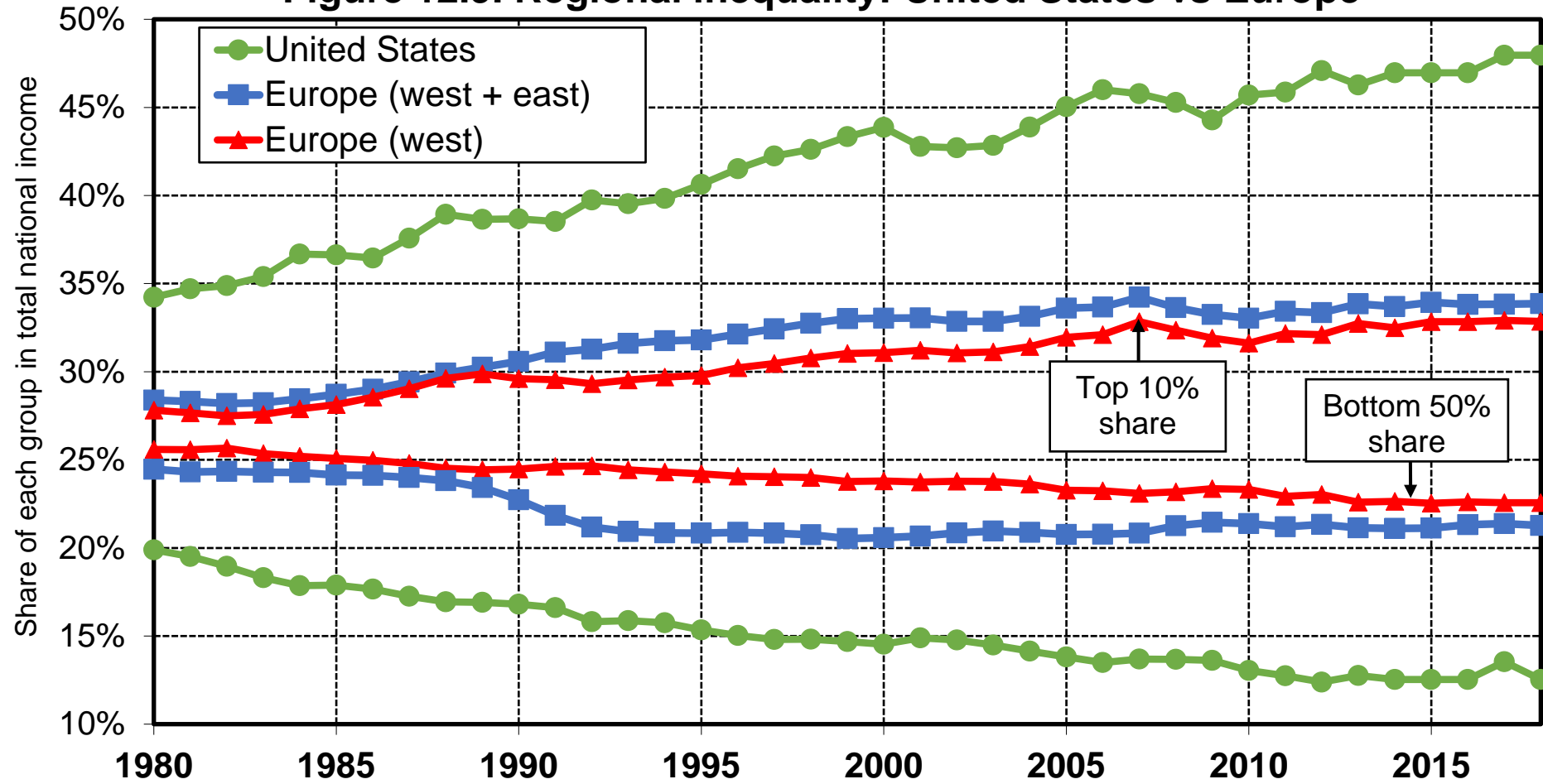


Figure 12.9. Regional inequality: United States vs Europe



Interpretation. Income inequality is higher when one combines Western and Eastern Europe (population 540 millions inhabitants) than if one looks only at Western Europe (420 millions) and excludes Eastern Europe (120 millions), given the persistent average income gaps between West and East. In any case, inequality is much smaller than in the United States (320 millions inhabitants).
Sources and series: see piketty.pse.ens.fr/ideology.